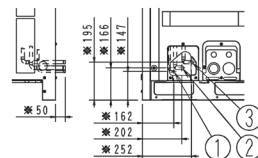
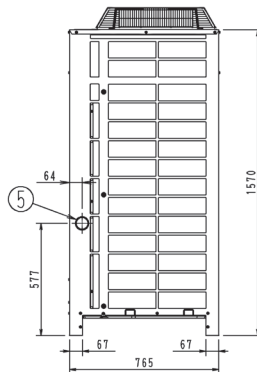
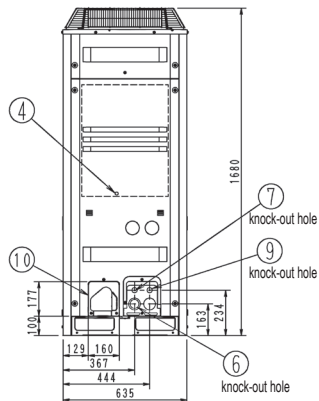
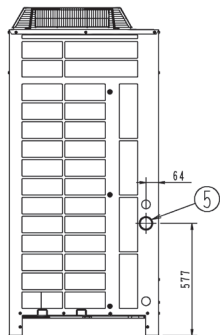
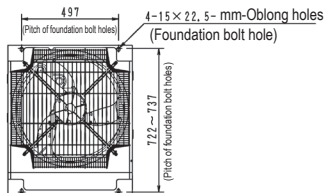
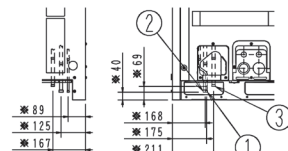


# RREQ140P3



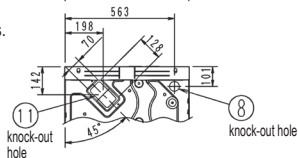
(BACK SIDE UP PART)



(DETAIL FOR BOTTOM SIDE)

## NOTES

- ※ Shows the dimensions after fixing the accessory pipes.
- For piping connection method (front and bottom sides) see the installation manual.
- Suction gas pipe  
 ø 15.9 Brazing connection \*\*\* RREQ140P3  
 ø 19.1 Brazing connection \*\*\* RREQ180,212P3  
 HP/LP gas pipe  
 ø 12.7 Brazing connection \*\*\* RREQ140P3  
 ø 15.9 Brazing connection \*\*\* RREQ180,212P3



Nr	Name	Description
1	Liquid pipe connection port	Ø 9.5 Brazing connection
2	Suction gas pipe connection port	See note 3
3	High and low pressure gas pipe connection port	See note 3
4	Grounding terminal	Inside of switch box (M8)
5	Power cord routing hole (side)	Ø 62
6	Power cord routing hole (front)	Ø 45
7	Power cord routing hole (front)	Ø 27
8	Power cord routing hole (bottom)	Ø 50
9	Wire routing hole (front)	Ø 27
10	Pipe routing hole (front)	See note 2
11	Pipe routing hole (bottom)	See note 2