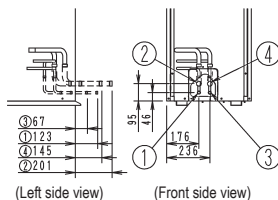
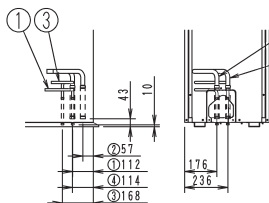


**NOTES**

- Detail for front side and detail for bottom side indicate the dimensions after fixing the attached piping.
- Gas pipe connection port
  - Ø22.2 Brazing connection - RTSYQ10PY1 (E)
  - Ø28.6 Brazing connection - RTSYQ14, 16, 20PY1 (E)
- Liquid pipe connection port
  - Ø9.5 Brazing connection - RTSYQ10PY1 (E)
  - Ø12.7 Brazing connection - RTSYQ14, 16PY1 (E)
  - Ø15.9 Brazing connection - RTSYQ20PY1 (E)

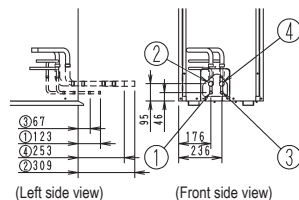


CASE OF FRONT CONNECTION

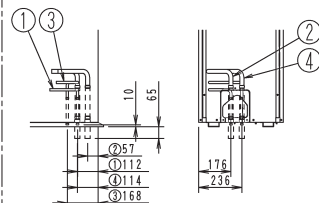


CASE OF BOTTOM CONNECTION

Case of RTSYQ10PY1 (E)



CASE OF FRONT CONNECTION



CASE OF BOTTOM CONNECTION

Case of RTSYQ14, 16, 20PY1 (E)

Nr	Part name	Remarks
1	Liquid pipe connection port (to outdoor unit)	See note 2
2	Gas pipe connection port (to outdoor unit)	See note 2
3	Liquid pipe connection port (to indoor unit)	See note 2
4	Gas pipe connection port (to indoor unit)	See note 2
5	Grounding terminal	Inside of switch box (M5)
6	Liquid pipe routing hole (to outdoor unit)	Ø35
7	Gas pipe routing hole (to outdoor unit)	Ø50
8	Liquid pipe routing hole (to indoor unit)	Ø35
9	Gas pipe routing hole (to indoor unit)	Ø50
10	Pipe routing hole (front)	
11	Power cord routing hole (side)	Ø45
12	Power cord routing hole (bottom)	Ø35