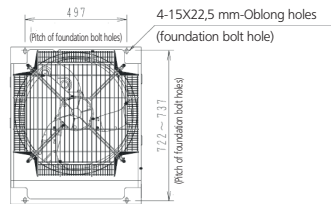
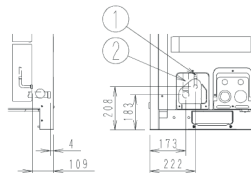
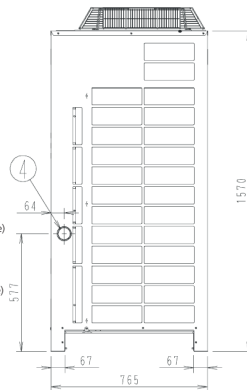
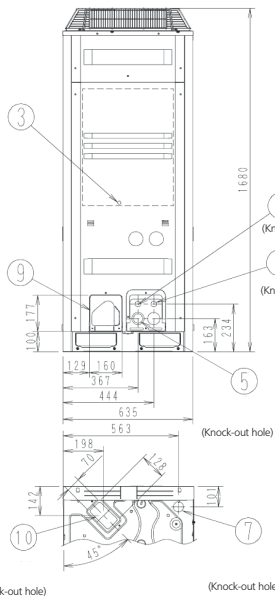
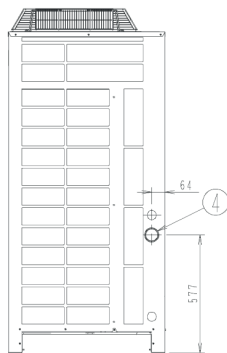


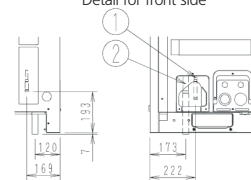
ERQ125AW1



Note) 1. Detail for front side and detail for bottom side indicate the dimensions after fixing the attached piping.



Detail for front side



Detail for bottom side

- 1 Liquid pipe connection port $\phi 9.5$ Brazing connection
- 2 Gas pipe connection port $\phi 15.9$ Brazing connection
- 3 Grounding terminal inside of switch box (M8)
- 4 Power cord routing hole (side) $\phi 62$
- 5 Power cord routing hole (front) $\phi 45$
- 6 Power cord routing hole (front) $\phi 27$
- 7 Power cord routing hole (bottom) $\phi 20$
- 8 Wire routing hole (front) $\phi 50$
- 9 Pipe routing hole (front)
- 10 Pipe routing hole (bottom)