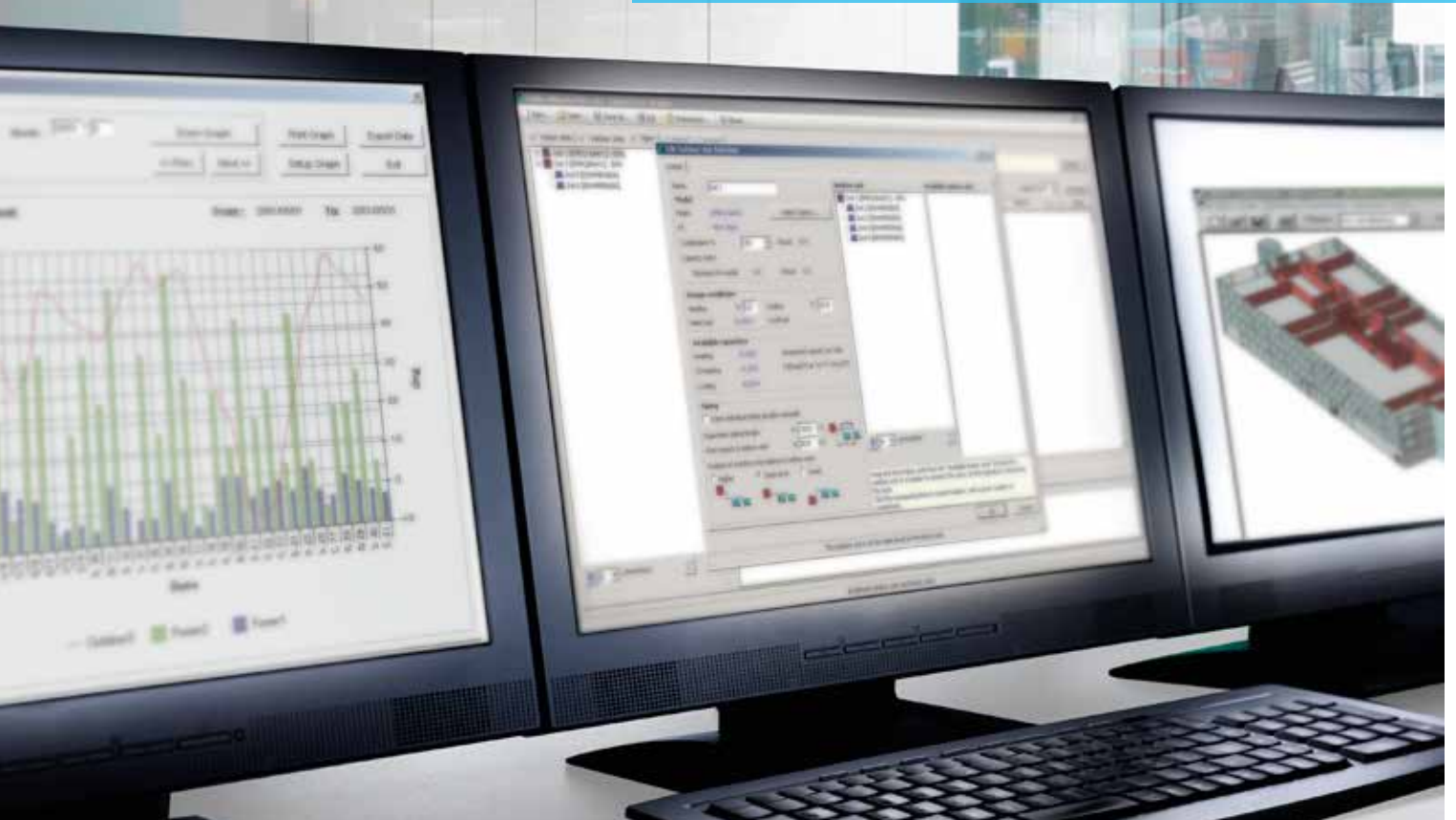


# DIII-net modbus interface EKMBDXA



- › Modbus RS485 interface for integration up to 64 indoor units groups
- › BMS integration of RA, Sky Air, VRV Inverter chillers and AHU

# System overview

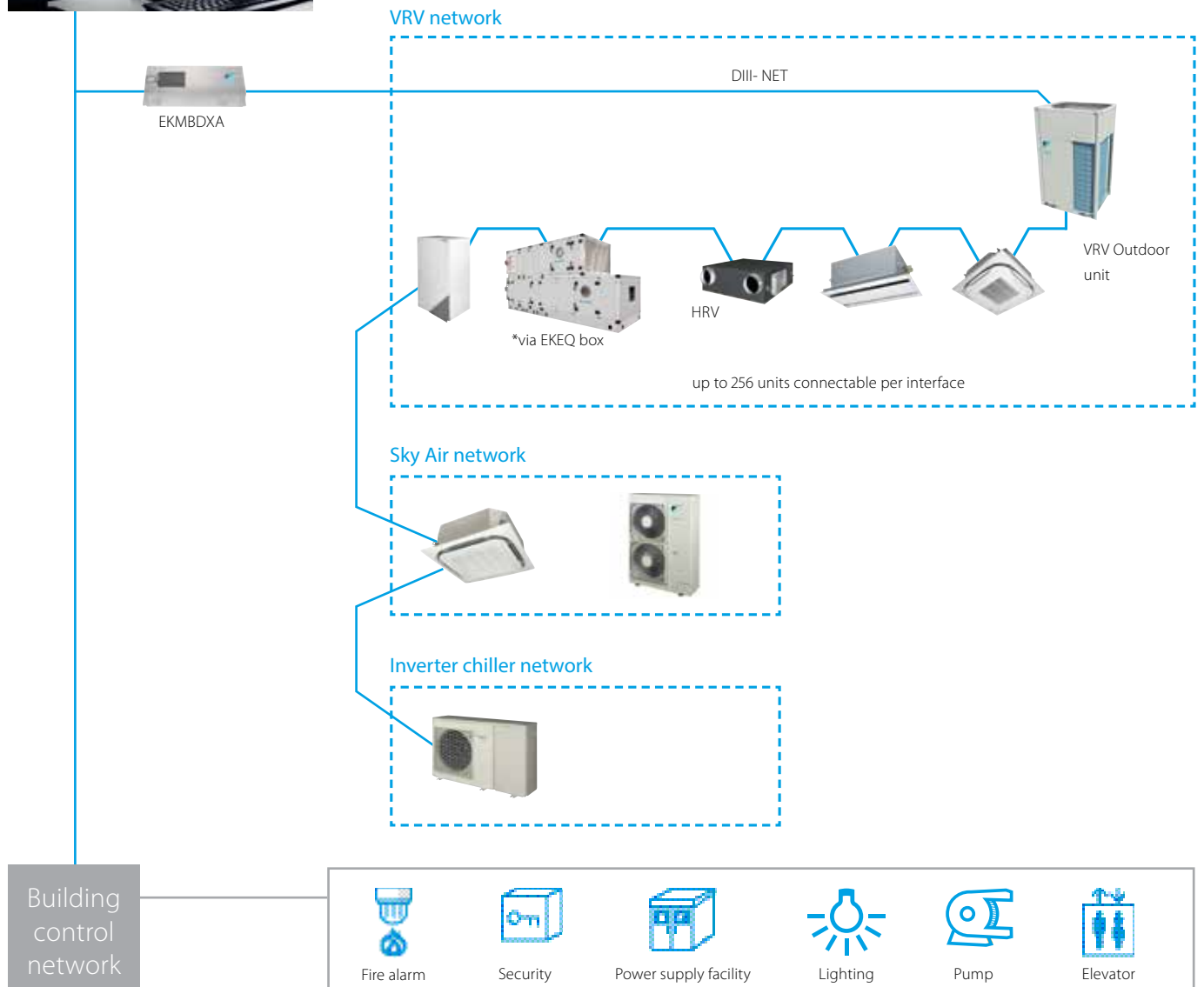
## Cross pillar integration

Easy integration of:

- VRV indoor units
- Heat reclaim ventilation
- VRV hydroboxes
- Biddle air curtains
- Split and Sky Air indoor units
- Daikin Altherma Flex Type heating
- Inverter chillers
- DX air handling units



For detailed information on compatible products refer to the engineering databook



# Overview of functions

		VRV / Sky Air	HRV	Split	VRV hydrobox LT & HT	Air curtains	ERQ control box for AHU	Heating	Applied
On/Off	R/W	•	•	•	•	•	•	•	•
Error	RO	•	•	•	•	•	•	•	•
Operation mode	R/W	•	•	•	•	•	•	•	•
Ventilation operation mode	R/W		•						
Quiet mode (low noise)	R/W				•			•	•
Fan speed	R/W	•	•			•			
Fan direction	R/W	•							
Room temperature	RO	•		•	•		•	•	
Room temperature setpoint	R/W	•		•	•	•	•	•	
Room temperature setpoint range	RO	•		•	•	•	•	•	
Leaving water setpoint	R/W				•			•	•
Leaving water setpoint range	RO				•			•	•
Filter sign	R/W	•	•			•		•	
Domestic hot water Rehaet / Storage	R/W				•			•	
user interface lock	W	•	•	•	•	•	•	•	•
Forced off	R/W	•	•	•	•	•	•	•	•
Indoor status	RO	•		•	•	•	•	•	•
Indoor unit capability	RO	•		•	•	•	•	•	•
Indoor detail	RO	•			•	•			
Communication status of units	RO	•	•	•	•	•	•	•	•
Adapter status	RO	•	•	•	•	•	•	•	•

RO: Read only = Monitor

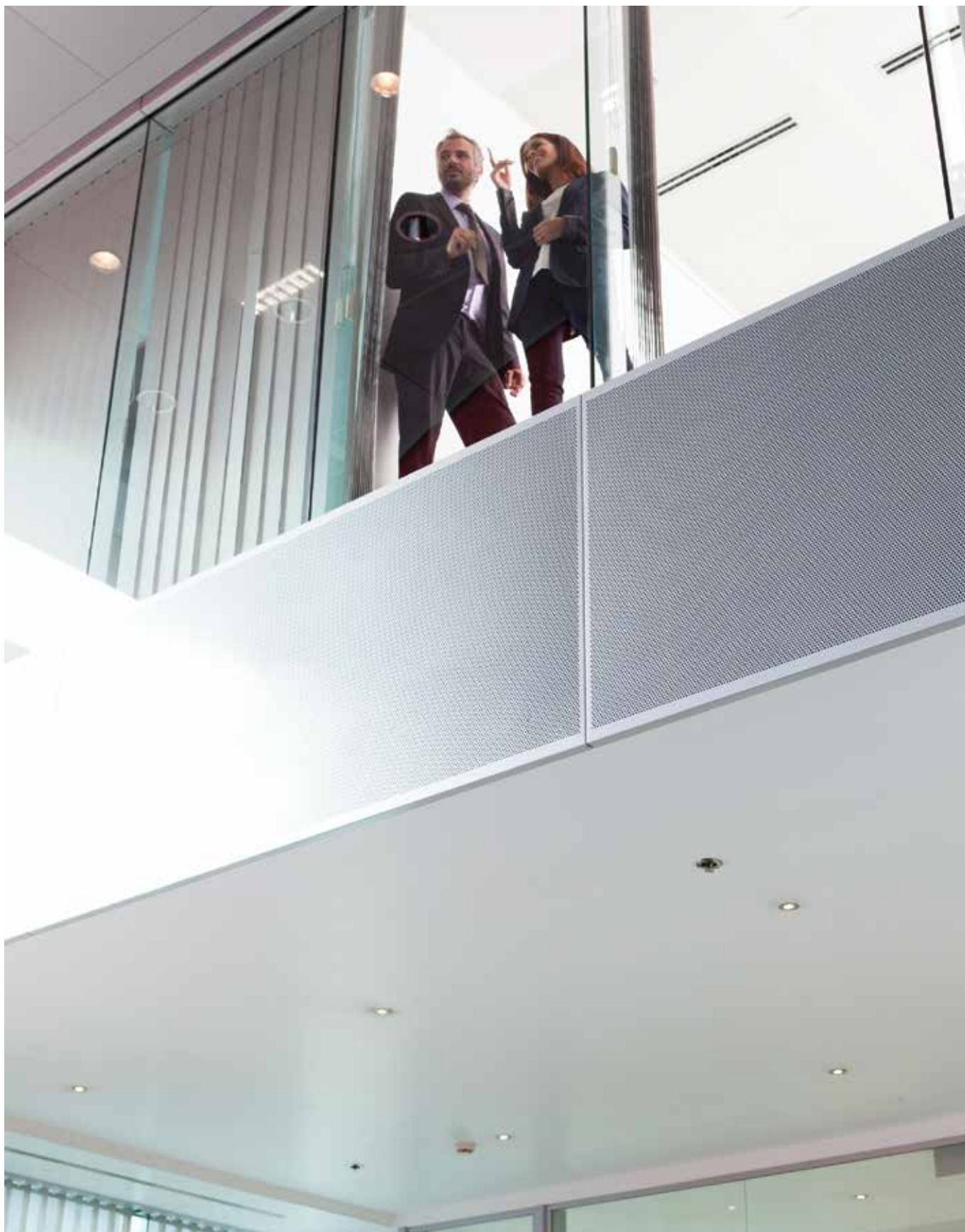
RW: Read/write = Monitor & control

Note: For full details and selection refer to engineering databook

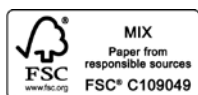
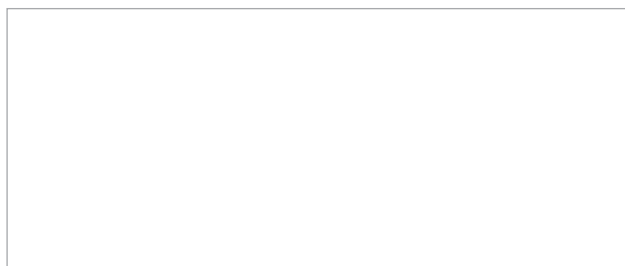
## Specifications

		<b>EKMBDXA7V1</b>	
Maximum number of connectable indoor units		64	
Maximum number of connectable outdoor units		10	
Communication	DIII-NET - Remark	DIII-NET (F1F2)	
	Protocol - Remark	2 wire; communication speed: 9600 bps or 19200 bps	
	Protocol - Type	RS485 (modbus)	
	Protocol - Max. Wiring length	m	500
Parity / Stop bit		Even 1 stop bit / Odd 1 stop bit / None 2 stop bit / None 1 stop bit	
Dimensions	HeightxWidthxDepth	mm	124x379x87
Weight		kg	2.1
Ambient temperature - operation	Max.	°C	60
	Min.	°C	0
Installation		Indoor installation	
Power supply	Frequency	Hz	50
	Voltage	V	220-240

Compatible with all DIII-net centralised controls such as Intelligent Touch Manager, ... For more information refer to engineer databook.



**Daikin Europe N.V.** Naamloze Vennootschap Zandvoordestraat 300 · 8400 Oostende · Belgium · [www.daikin.eu](http://www.daikin.eu) · BE 0412 120 336 · RPR Oostende (Responsible Editor)



ECPEN15-312 200 - 10/14



The present publication is drawn up by way of information only and does not constitute an offer binding upon Daikin Europe N.V. Daikin Europe N.V. has compiled the content of this publication to the best of its knowledge. No express or implied warranty is given for the completeness, accuracy, reliability or fitness for particular purpose of its content and the products and services presented therein. Specifications are subject to change without prior notice. Daikin Europe N.V. explicitly rejects any liability for any direct or indirect damage, in the broadest sense, arising from or related to the use and/or interpretation of this publication. All content is copyrighted by Daikin Europe N.V.

The present publication supersedes ECPEN14-301A. Printed on non-chlorinated paper. Prepared by Platzer Kommunikation, Germany.